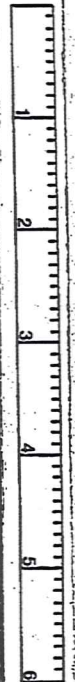


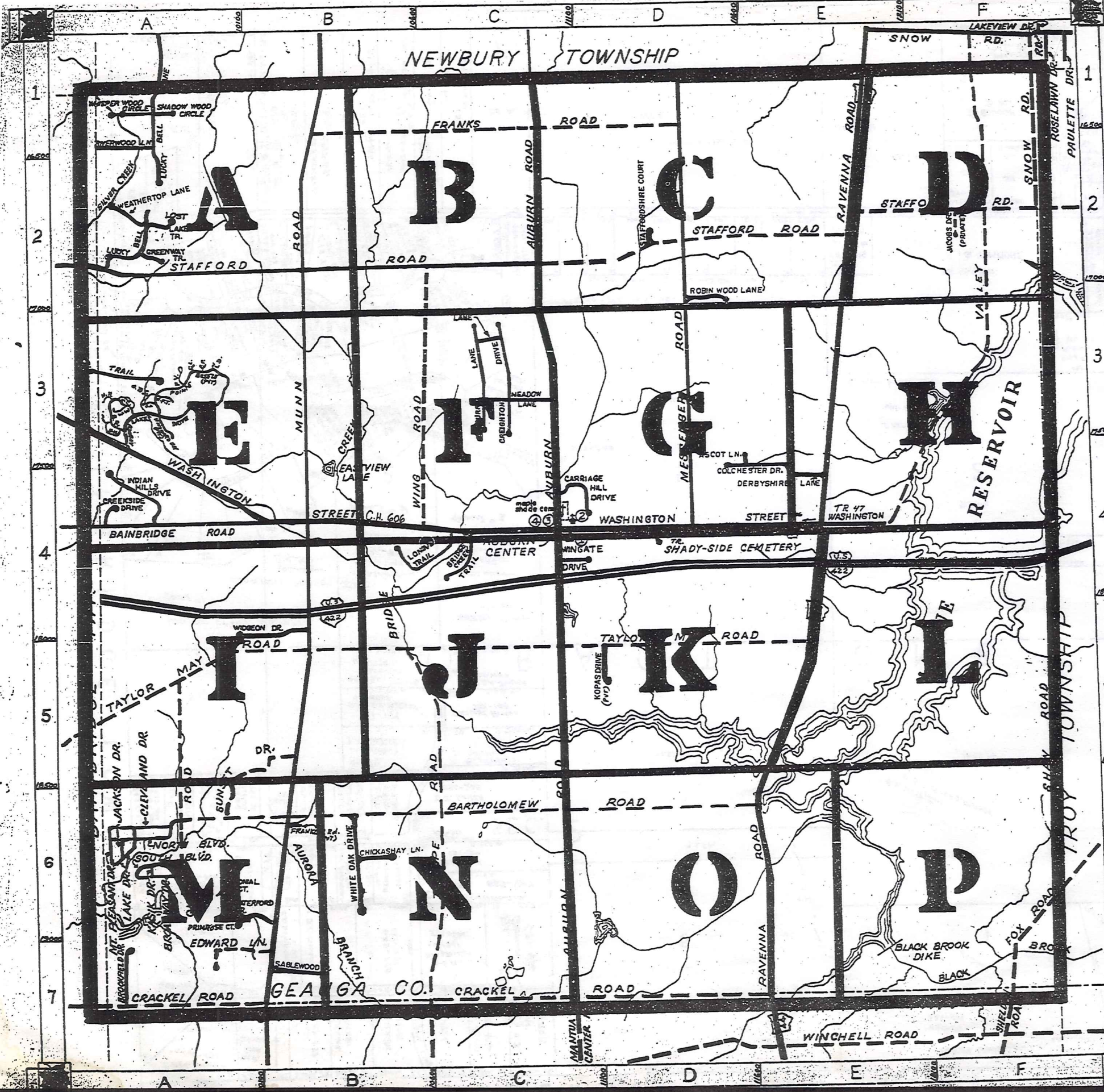
ROAD INDEX

TRW-REDI

SCALE IN 1/10 OF AN INCH



1-800-345-7334



A	ASCOT LANE E3-4 AUBURN ROAD C1-C7 AUBURN LAKES DRIVE A3	J	JACKSON DRIVE PVT A6 JACOBS DRIVE (PVT.) F2	S	SABLEWOOD DRIVE B7 SETTLERS TRAIL D4 SHADOW WOOD CIRCLE A1 SHAW ROAD F4-F6 SIGNAL HILL (PVT.) A3 SNOW ROAD F1-F2 SOUTH BLVD. PVT A6 SOUTH PIN TAIL (PVT.) A3 STAFFORD ROAD A2-E2 STAFFORDSHIRE CT D2 SUNSET DRIVE B6-A6
B	BAINBRIDGE ROAD A4 BARTHOLOMEW RD. A6-D6 BASS RUN (PVT.) A3	K	KASIK DRIVE PVT A6 KOPAS DRIVE (PVT.) D5	T	TAYLOR MAY RD. A5-E5 THORPE ROAD B5-B7 TIMBER LN. C3 TWIN CREEKS (PVT.) A3
C	BRIDGE CREEK TR. C4 BROADWAY DRIVE PVT A6 BROOKFIELD DRIVE A7	L	LAKE DRIVE PVT A6 LONG DRIVE (PVT.) A3 LONGVIEW TRAIL C4 LOST LAKES TRAIL A2 LUCKY BELL LANE A1-A2	U	U.S. 422 A4-F4
D	DERBYSHIRE LANE E4	M	MEADOW LANE C3 MESSENGER ROAD E1-D4 MT. PLEASANT DRIVE PVT A6 MUNN ROAD B1-B7	V	VALLEY ROAD F1-F4
E	EAGLES POINTE (PVT.) A3 EDWARD LANE A7	N	NORTH BLYD. PVT A6 NORTH PIN TAIL (PVT.) A3	W	WASHINGTON STREET A3-E4 WATERFORD TRAIL A6 WEATHERTOP LANE A2 WHISPER WOOD CIRCLE A1 WHITE OAK DRIVE B6 WIDGEON DRIVE A5-B5 WINDWARD WAY (PVT.) A3 WING ROAD C3-C4 WINGATE DR. C4 WOOD ACRE TRAIL A3 WOODSONG WAY (PVT.) A3
F	FAIRWAY VIEW (PVT.) A3 FOX ROAD F6-F7 FRANKS ROAD B1-D1 FRANKLIN ROAD (PVT.) B6	O	OVERLOOK BROOK CTPVT A3 OVERLOOK BROOK DR (PVT.) A3	Y	
G	GREENWAY TRAIL (PVT.) A2	P	POINTE BREEZE (PVT.) A3 PRIMROSE COURT A6	Z	
H	HEATHER HILL (PVT.) A3	Q	QUINN ROAD A5-A6		
I	INDIAN HILLS DR. A4	R	RAVENNA ROAD E1-E7 RIVER WOOD LANE A1 ROBIN WOOD LANE D 2-3		

- ① AUBURN ELEM. SCHOOL
- ② AUBURN COMMUNITY CHURCH
- ③ AUBURN TOWN HALL
- ④ AUBURN VOL. FIRE DEPT.

AUBURN TOWNSHIP

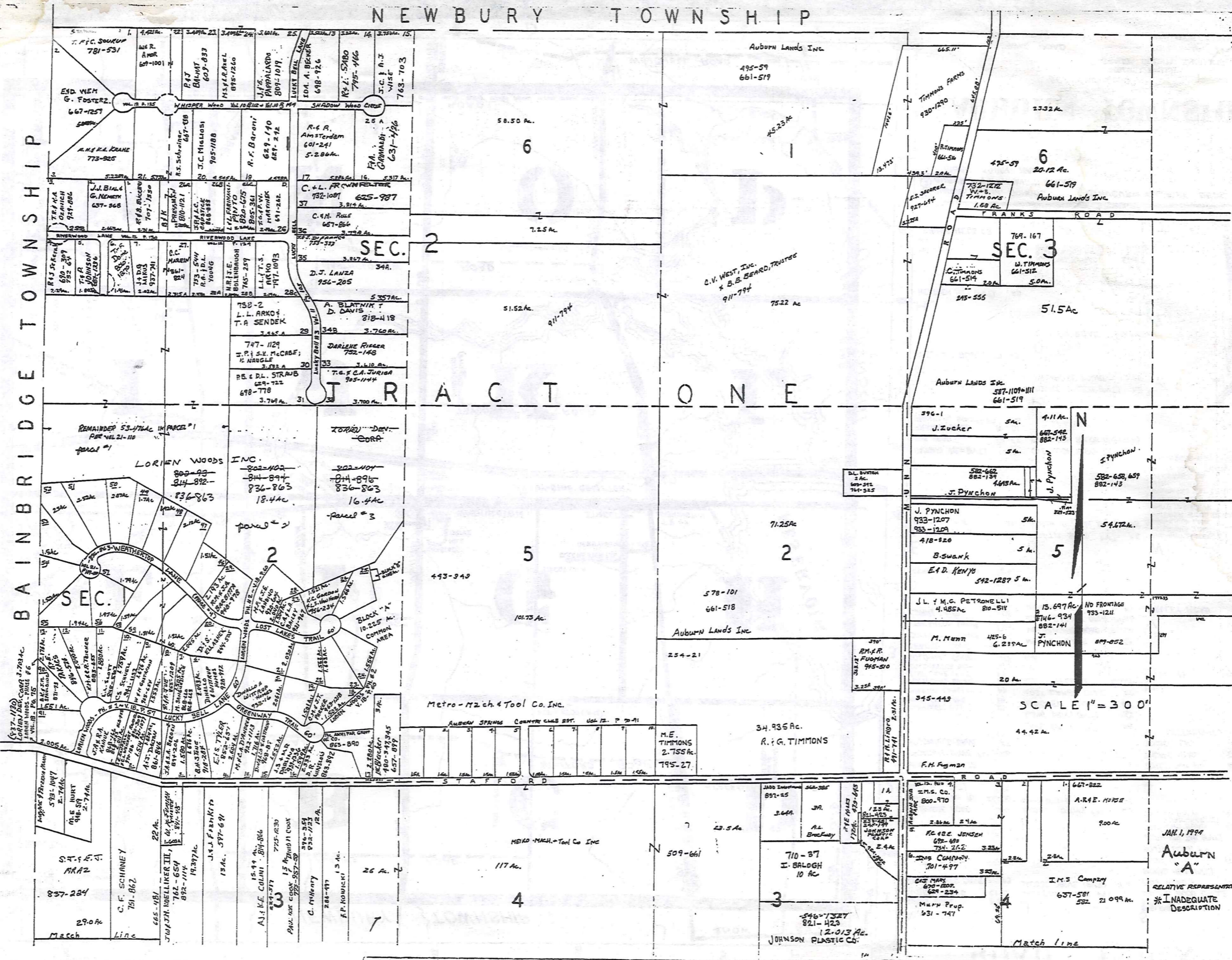
SCALE: 1" = 2000'

ROBERT L. PHILLIPS
GEALGA COUNTY ENGINEER

--- UNPAVED ROAD
--- PAVED ROAD
--- TOWNSHIP LINE
--- COUNTY LINE

NEW BURY TOWNSHIP

BAINBRIDGE TOWNSHIP



TRW-REDI SCALE IN 1/10 OF AN INCH

1-800-345-7334

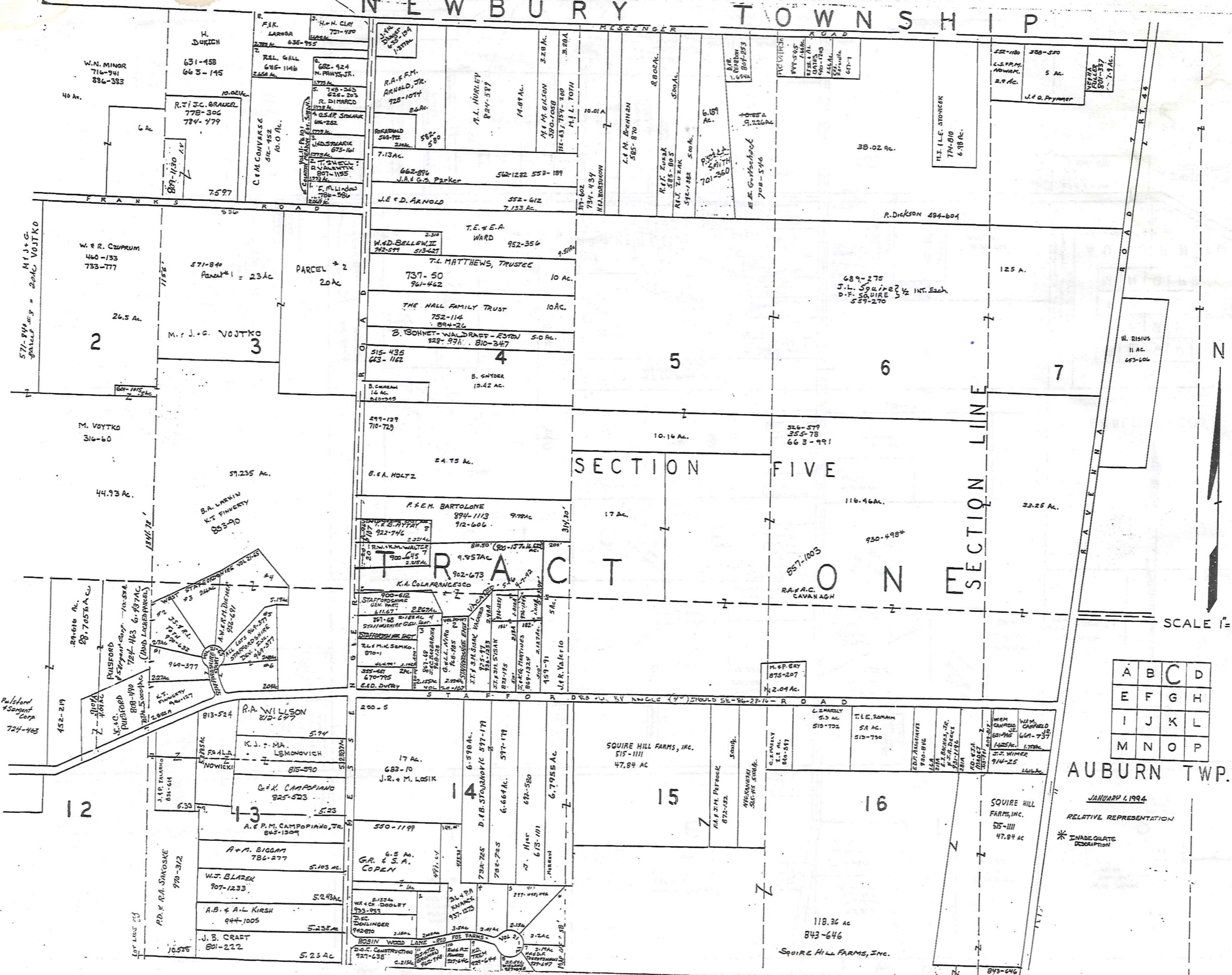
SCALE 1" = 300'

JAN 1, 1994

Auburn "A"

RELATIVE REPRESENTATION *INADEQUATE DESCRIPTION

NEWBURY TOWNSHIP



SCALE 1"=300'

A	B	C	D
E	F	G	H
I	J	K	L
M	N	O	P

AUBURN TWP.

JANUARY 1, 1994
RELATIVE REPRESENTATION
* INADEQUATE DESCRIPTION

TRW-REDI
SCALE IN 1/10 OF AN INCH

1-800-345-7334

NEWBURY TOWNSHIP

BURTON TWP.

T R O Y T O W N S H I P

SCALE 1"=300'

JANUARY 1, 1994
RELATIVE REPRESENTATION

A	B	C	D
E	F	G	H
I	J	K	L
M	N	O	P

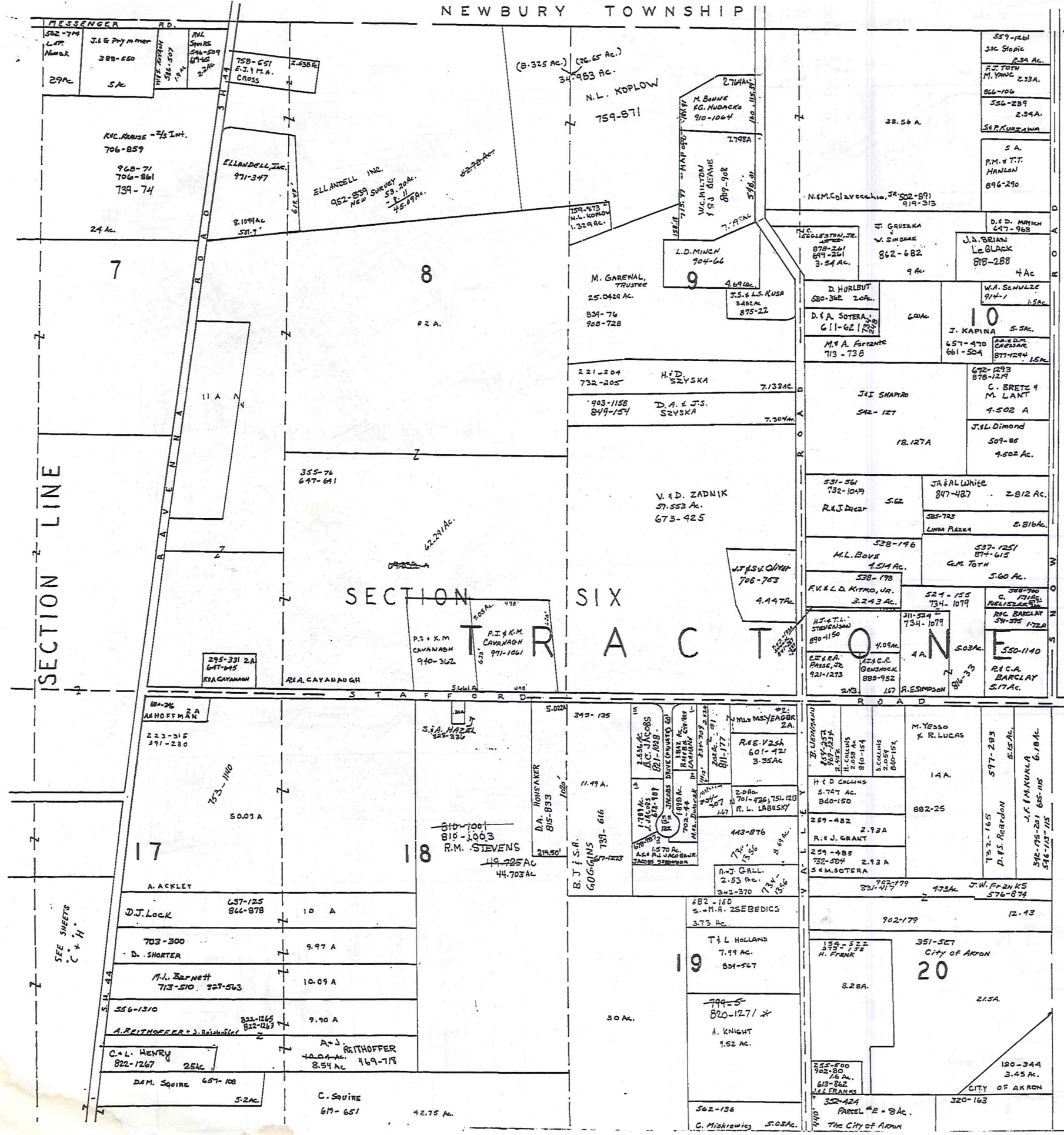
AUBURN TWP.

* INADEQUATE DESCRIPTION

TRW-REDI

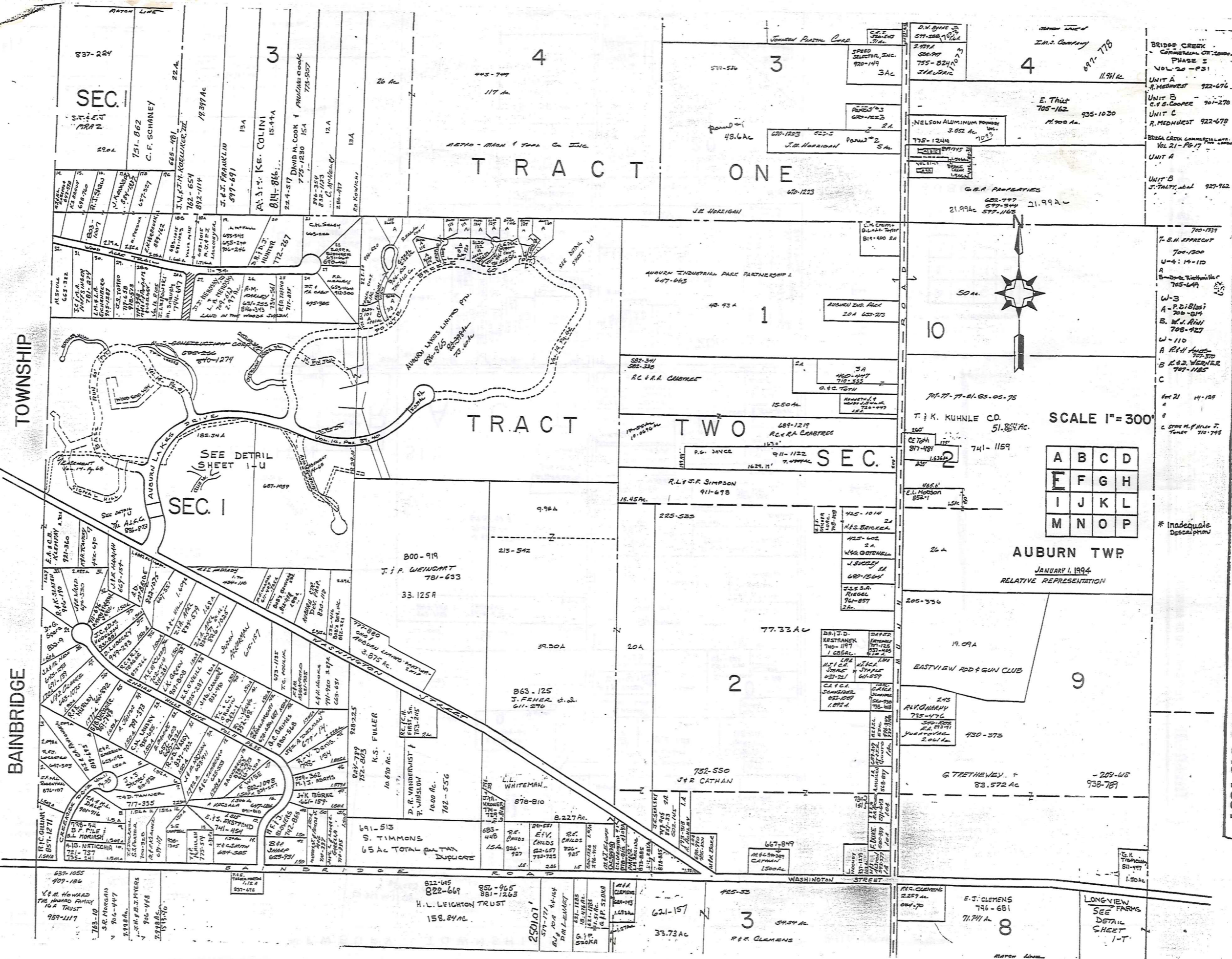
SCALE IN 1/10 OF AN INCH

1-800-345-7334



SECTION LINE

SEE SHEETS C & H



TOWNSHIP

BAINBRIDGE

SEC. 1

SEC. 1

TWO

SEC. 2

AUBURN TWP

JANUARY 1, 1994

RELATIVE REPRESENTATION

A	B	C	D
E	F	G	H
I	J	K	L
M	N	O	P

* Inadequate Description

SCALE 1" = 300'



TRW-REDI
SCALE IN 1/10 OF AN INCH

1-800-345-7334

837-224
SEC. 1
C.F. SCHANEY
751-862
665-481
18,997 Ac

TRACT ONE

TRACT TWO

TRACT

TRACT 4

TRACT 3

TRACT 4

TRACT 2

TRACT 9

TRACT 3

TRACT 8

637-1055
409-186
Y & M. HOWARD
THE HOWARD FAMILY
16A TRUST
959-1117

822-645
822-669
851-965
881-1265
H. L. LEIGHTON TRUST
158.84 Ac

250107
377-171
814-204
814-164
D.M. LAMBERT
814-175
814-185
814-195
814-205
G.P.P. STOKER

425-53
621-157
33.73 Ac
P.R. CLEMENS

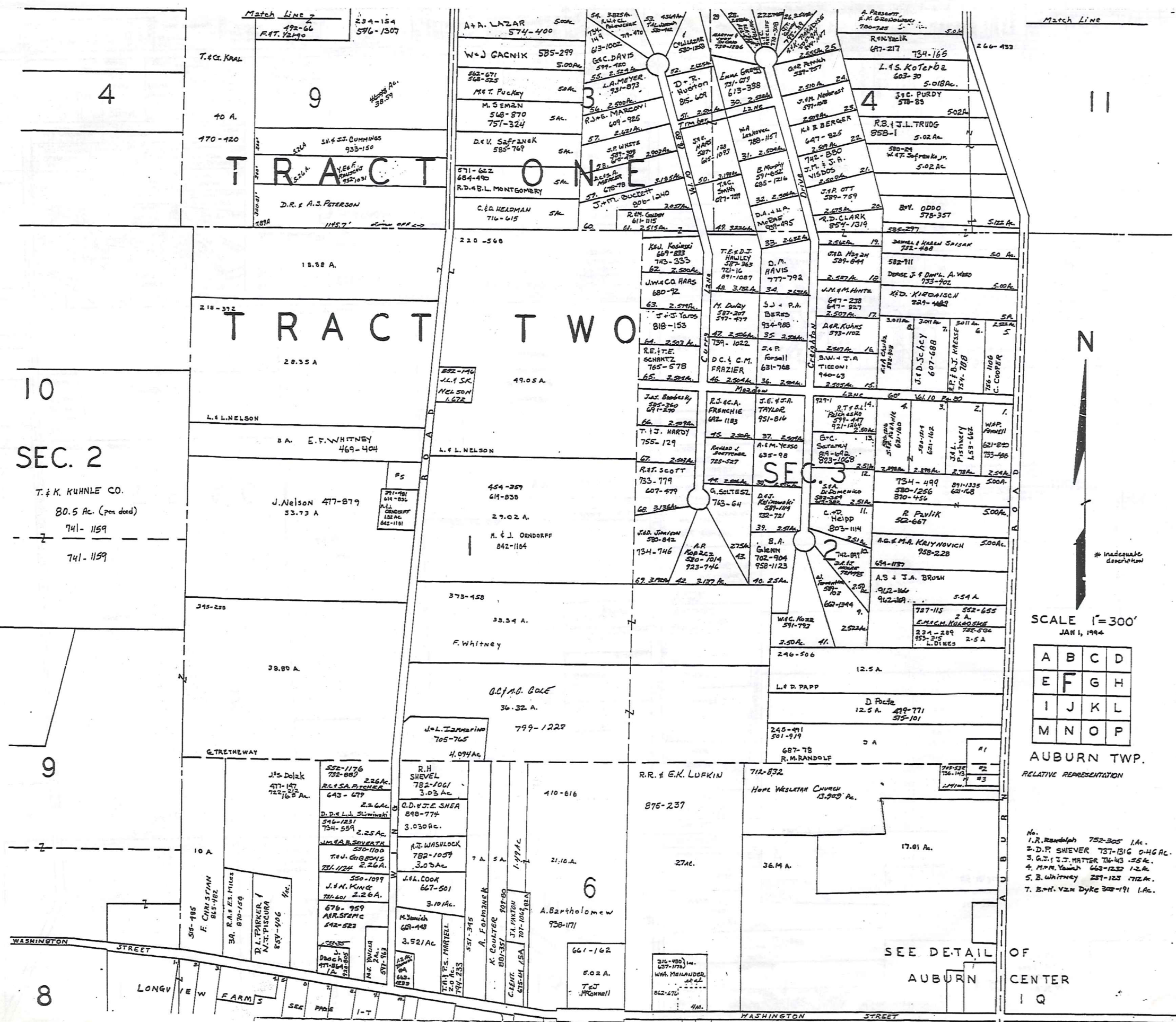
667-849
1500 Ac
E.J. CLEMENS
746-681
71,741 Ac

LONGVIEW FARMS
SEE
DETAIL
SHEET
1-T

BRIDGES CREEK
COMMERCIAL DISTRICT
PHASE 2
VOL. 22 - P. 31
UNIT A
R. MEDWEST 922-676
UNIT B
C. S. COOPER 901-270
UNIT C
R. MEDWEST 922-678
BRIDGES CREEK COMMERCIAL DISTRICT
VOL. 21 - P. 17
UNIT A
UNIT B
J. TAYLOR 927-922

700-1737
T. B. H. APPRENT
700-1300
U-4: 14-110
A
B-2002
705-647
W-3
A. P. Blesi
700-814
B. W. J. Rini
708-927
W-110
A. R. H. AUST
707-550
B. K. D. WERNER
707-1185
Unit 21
14-129
A
C. STAN M. F. HILL
710-798

Inadequate Description



4
9
10
SEC. 2
T. & K. KUHNLE CO.
80.5 Ac. (pen dead)
741-1159
741-1159

TRW-REDI
SCALE IN 1/10 OF AN INCH
1-800-345-7334

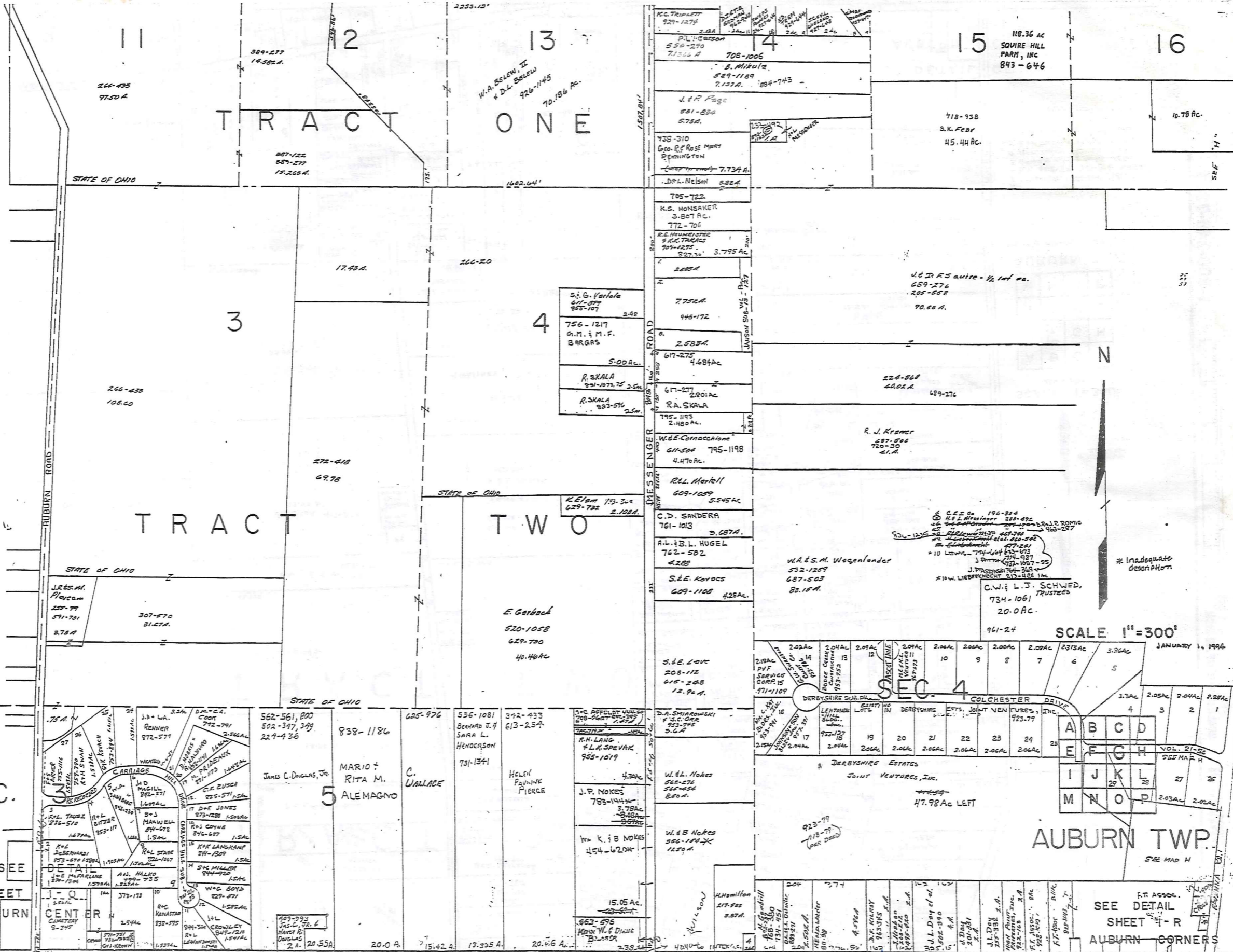
SCALE 1" = 300'
JAN 1, 1994

A	B	C	D
E	F	G	H
I	J	K	L
M	N	O	P

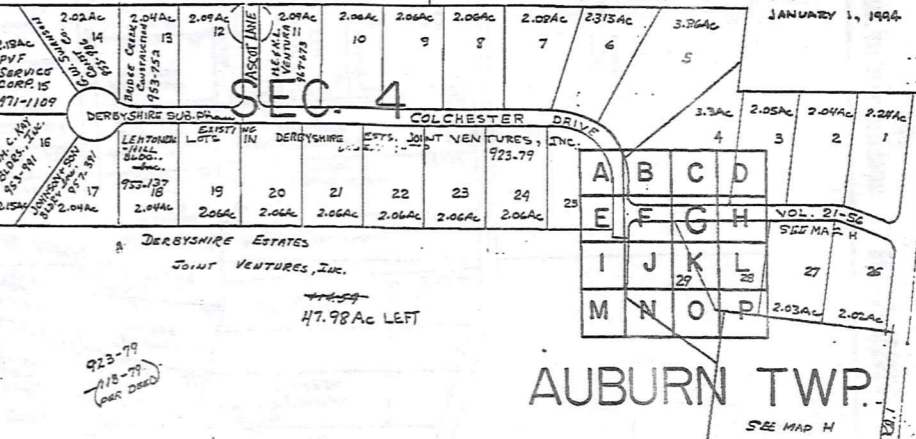
AUBURN TWP.
RELATIVE REPRESENTATION

- No.
1. R. Randolph 752-305 1Ac.
2. D.P. SNEVER 737-1316 0.46Ac.
3. G.J. J.T. MATTER 736-443 .55Ac.
4. M.P.M. YAMON 662-1232 1.2Ac.
5. S. Whitney 287-123 712Ac.
7. B.H. VAN DYKE 302-191 1Ac.

SEE DETAIL OF
AUBURN
CENTER
I Q



SEC. 3
SEE SHEET AUBURN CENTER



TRV-REDI SCALE IN 1/10 OF AN INCH 1-800-345-7334

SCALE 1"=300'

JANUARY 1, 1994

SEE DETAIL SHEET R AUBURN CORNERS

* Inadequate description

C.W. & L.J. SCHWED, TRUSTEES
734-1061
20.0 AC.

W.A.S.M. Wegenslander
572-1259
687-503
82.15 AC.

6 C.E. Co. 196-884
10 H.L. Wessinger 289-692
11 J.R. Romig 463-287
12 J.R. Romig 463-287
13 J.R. Romig 463-287
14 J.R. Romig 463-287
15 J.R. Romig 463-287
16 J.R. Romig 463-287
17 J.R. Romig 463-287
18 J.R. Romig 463-287
19 J.R. Romig 463-287
20 J.R. Romig 463-287

S.G. Varfala
611-377
865-107
2.48
756-1217
A.M. & M.F. BARGAS
5.00 AC.
R. SKALA
821-1073.75
2.5 AC.
R. SKALA
823-576
2.5 AC.

L. Elam 175.3 AC
629-732
2.108 AC.

E. Garboc
520-1058
629-700
46.46 AC

MARIO & RITA M. ALEMAGNO
838-1186

C. WALLACE

Helen PAUNINE PIERCE

15.05 AC.
W. K. & B. NOKES
454-6204

J.P. NOKES
783-1444
3.78 AC.

S.E. Love
208-112
618-268
13.96 AC.

S.E. Kovacs
609-1108
42.8 AC.

R.L. Markell
609-1059
5.545 AC.

W.E. Conachione
611-506
795-1198
4.476 AC.

795-1195
2.480 AC.

R.E. HUNTER
9 AC. TRACTS
707-1275
3.795 AC.

705-722
K.S. HONSAKER
3.807 AC.
772-706

J. & R. Page
581-820
5.75 AC.

K.C. TRIPLETT
929-1274
2.82 AC.

P.L. CARSON
530-270
7.156 AC.

708-1006
B. Mikulic
589-1189
7.137 AC.

738-310
Geo. R. Rose Mary
REMNINGTON
7.734 AC.

D.P. NELSON
5.82 AC.

705-722
K.S. HONSAKER
3.807 AC.
772-706

R.E. HUNTER
9 AC. TRACTS
707-1275
3.795 AC.

795-1195
2.480 AC.

775-211
945-172

2.583 AC.

617-275
4.684 AC.

617-277
2.901 AC.

795-1195
2.480 AC.

W.E. Conachione
611-506
795-1198
4.476 AC.

R.L. Markell
609-1059
5.545 AC.

C.D. SANDERA
761-1013
3.687 AC.

A.L. & B.L. HUGEL
762-582
4.289

S.E. Kovacs
609-1108
42.8 AC.

S.E. Love
208-112
618-268
13.96 AC.

W.A.S.M. Wegenslander
572-1259
687-503
82.15 AC.

W.E. Conachione
611-506
795-1198
4.476 AC.

R.L. Markell
609-1059
5.545 AC.

C.D. SANDERA
761-1013
3.687 AC.

A.L. & B.L. HUGEL
762-582
4.289

S.E. Kovacs
609-1108
42.8 AC.

S.E. Love
208-112
618-268
13.96 AC.

W.A.S.M. Wegenslander
572-1259
687-503
82.15 AC.

W.E. Conachione
611-506
795-1198
4.476 AC.

R.L. Markell
609-1059
5.545 AC.

C.D. SANDERA
761-1013
3.687 AC.

A.L. & B.L. HUGEL
762-582
4.289

S.E. Kovacs
609-1108
42.8 AC.

118.36 AC
SQUIRE HILL
FARM, INC
843-646

718-938
S.K. Fear
45.44 AC.

40.78 AC.

718-938
S.K. Fear
45.44 AC.

718-938
S.K. Fear
45.44 AC.

718-938
S.K. Fear
45.44 AC.

718-938
S.K. Fear
45.44 AC.

718-938
S.K. Fear
45.44 AC.

718-938
S.K. Fear
45.44 AC.

718-938
S.K. Fear
45.44 AC.

718-938
S.K. Fear
45.44 AC.

718-938
S.K. Fear
45.44 AC.

718-938
S.K. Fear
45.44 AC.

718-938
S.K. Fear
45.44 AC.

718-938
S.K. Fear
45.44 AC.

718-938
S.K. Fear
45.44 AC.

718-938
S.K. Fear
45.44 AC.

718-938
S.K. Fear
45.44 AC.

718-938
S.K. Fear
45.44 AC.

718-938
S.K. Fear
45.44 AC.

718-938
S.K. Fear
45.44 AC.

718-938
S.K. Fear
45.44 AC.

718-938
S.K. Fear
45.44 AC.

718-938
S.K. Fear
45.44 AC.

718-938
S.K. Fear
45.44 AC.

718-938
S.K. Fear
45.44 AC.

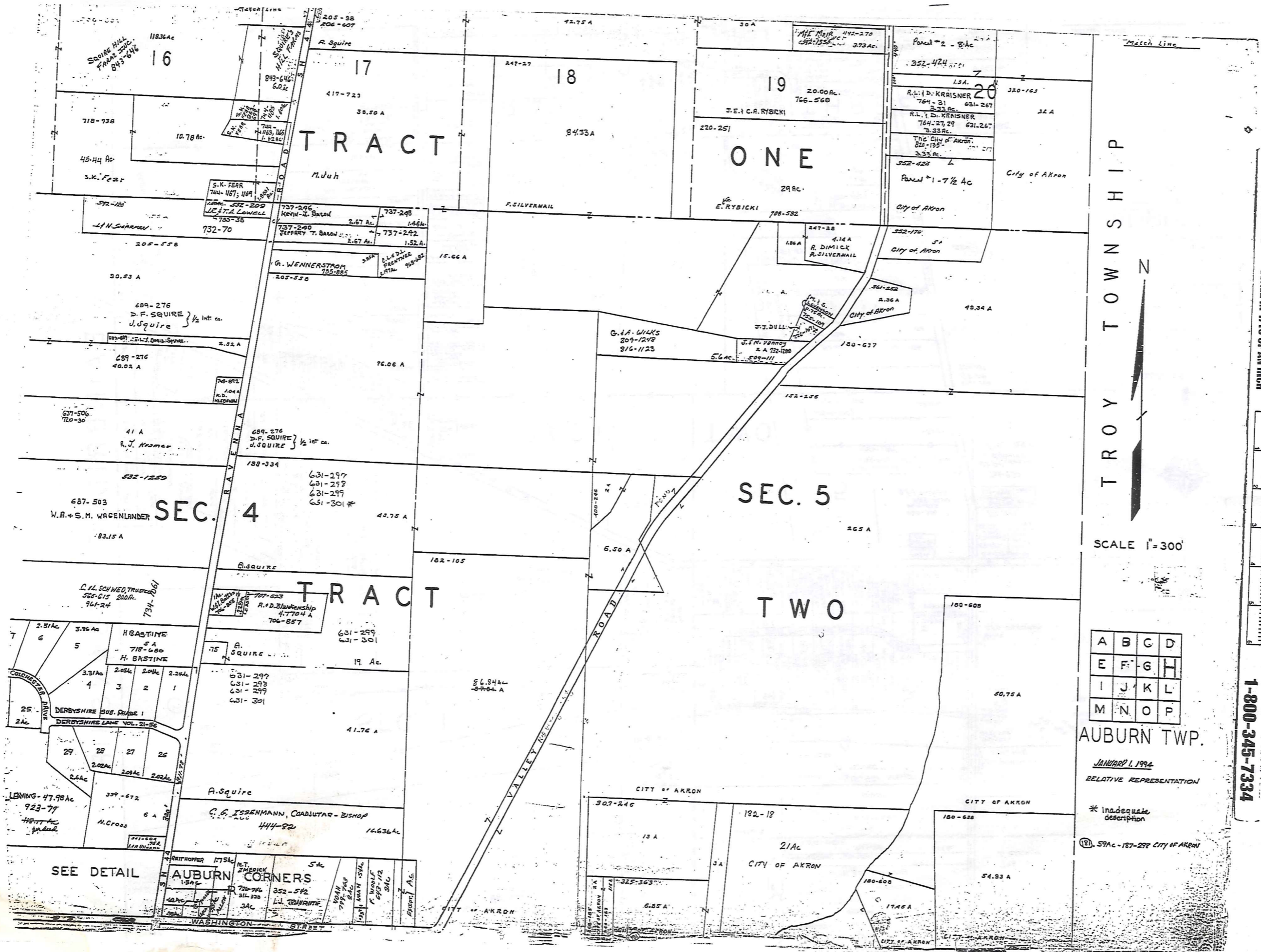
718-938
S.K. Fear
45.44 AC.

718-938
S.K. Fear
45.44 AC.

718-938
S.K. Fear
45.44 AC.

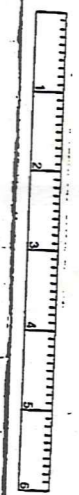
718-938
S.K. Fear
45.44 AC.

718-938
S.K. Fear
45.44 AC.



TRW-REDI

SCALE IN 1/10 OF AN INCH



1-800-345-7334

TROY TOWNSHIP

SCALE 1" = 300'

A	B	C	D
E	F	G	H
I	J	K	L
M	N	O	P

AUBURN TWP.

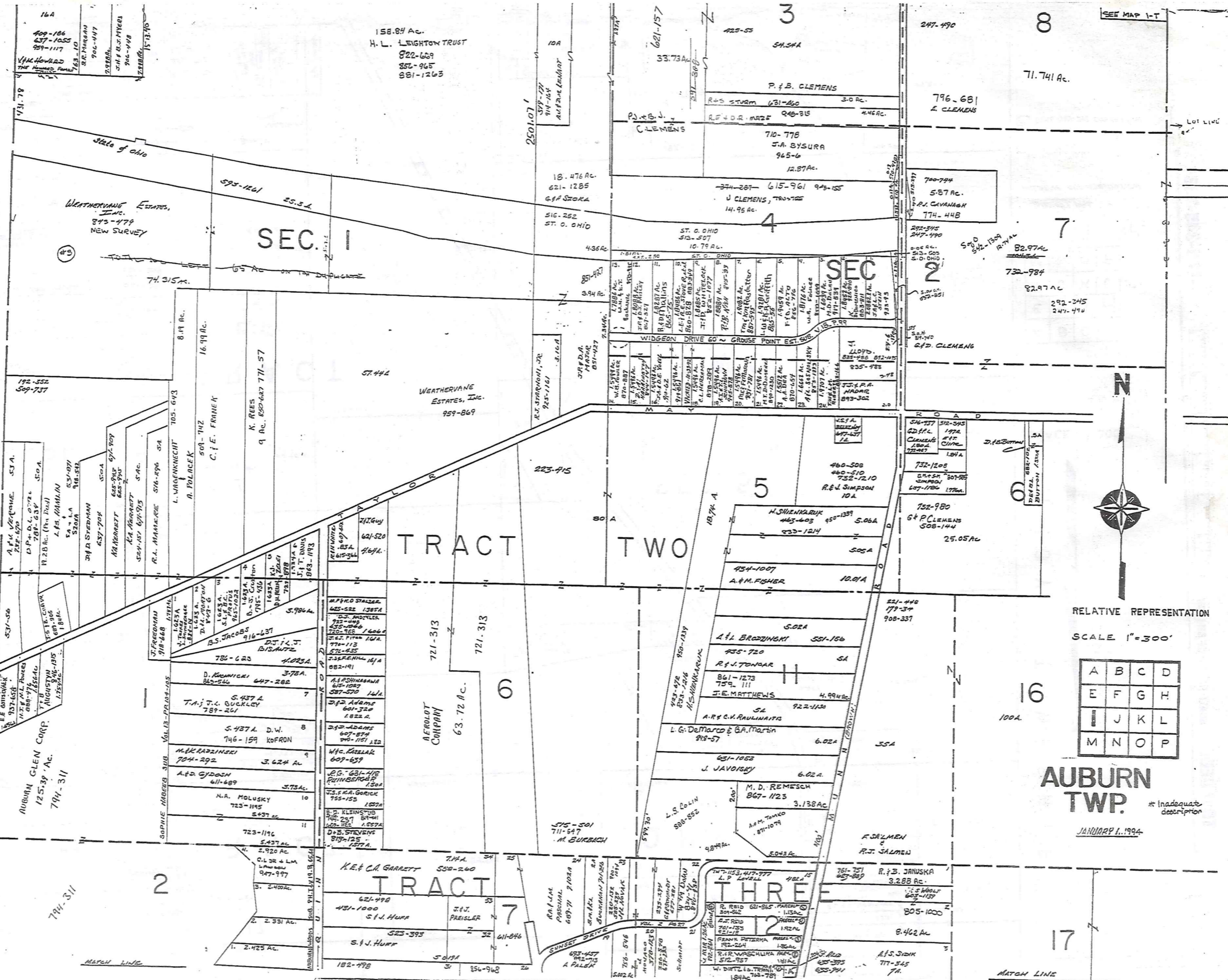
JANUARY 1, 1994
RELATIVE REPRESENTATION

* Inadequate description

(18) 59 AC - 187-298 CITY OF AKRON

89511

BAINBRIDGE TOWNSHIP



16A
409-186
637-1035
959-1117
V.H. HOWARD
THE HOWARD FAMILY
S.R. MORGAN
906-447
J.H. & J. MYER
906-448
15-13-76

158.84 Ac.
H. L. LEIGHTON TRUST
822-669
852-965
881-1263

WEATHERVANE ESTATES, INC.
845-479
NEW SURVEY

SEC. 1

SEC. 2

WEATHERVANE ESTATES, INC.
959-869

TRACT TWO

AERLOT COMPANY
721-313
721-313
63.72 AC.

TRACT THREE

AUBURN GLEN CORP.
125.39 AC.
794-311

794-311

71.741 Ac.

5.87 AC.

82.97 AC

292-345
247-490

100A



RELATIVE REPRESENTATION
SCALE 1"=300'

A	B	C	D
E	F	G	H
I	J	K	L
M	N	O	P

AUBURN TWP.
* Inadequate description

JANUARY 1, 1994

TRW-REDI
SCALE IN 1/10 OF AN INCH

1-800-345-7334

10

71.74 AC
CLEMENS
796-681

8

TRACT TWO

SEC 3

7

SEC. 2

82.97 AC

732-984

G.D. CLEMENS

24.20 AC
673-539

7

F.R. DONALD
61.1599
643-451
732-506
866-457

492-885
V.E.T.
CHIOCHETTI
55-842-1225
5.954

D.A. & M.D. BUTTON
809-434
D.F.W.L. BUTTON
675-1860

767-125
767-125

732-1230

11.89 AC
J.M. LAWRENCE
425-227 585-379

667-228
7.80 AC
J. LAWRENCE

701 A

8

732-1226
R.H. ROUACIC

10 A

705-472
M.K. SMILL
705-472
2.0

3.001 AC
JOHN H. WARD

655-47
455-75
2.001 AC

2.1076 AC
635-51

732-256
31-227
L.W.D. MAY
2 A

6

25.05 A

G.D. CLEMENS
792-980

26 AC

217-366
661-946
661-1212

36.34 AC

L.W. MAY

M.E. & P.M. RAINES
877-962
3.16 AC

43.97 A

245-437

50 A

A. DERECSEK

205-551

21.75 A

A. DERECSEK

221-448
775-34
908-337

16

100 A

F. SALMEN &
R.J. SALMEN

TRACT THREE

403-360

26
100 A

CITY OF AKRON

23 A
31

193-56
352-426
933-323

AUBURN TWP.

RELATIVE REPRESENTATION

* Inadequate description

A	B	C	D
E	F	G	H
I	J	K	L
M	N	O	P

JANUARY 1, 1992

12

17

22

27
100 A

59.31
48 A
32

D.J. PERKINS
673-489
D.J. PERKINS
653-289

W.A. LEACH
905-518

43.235 AC
804-17066

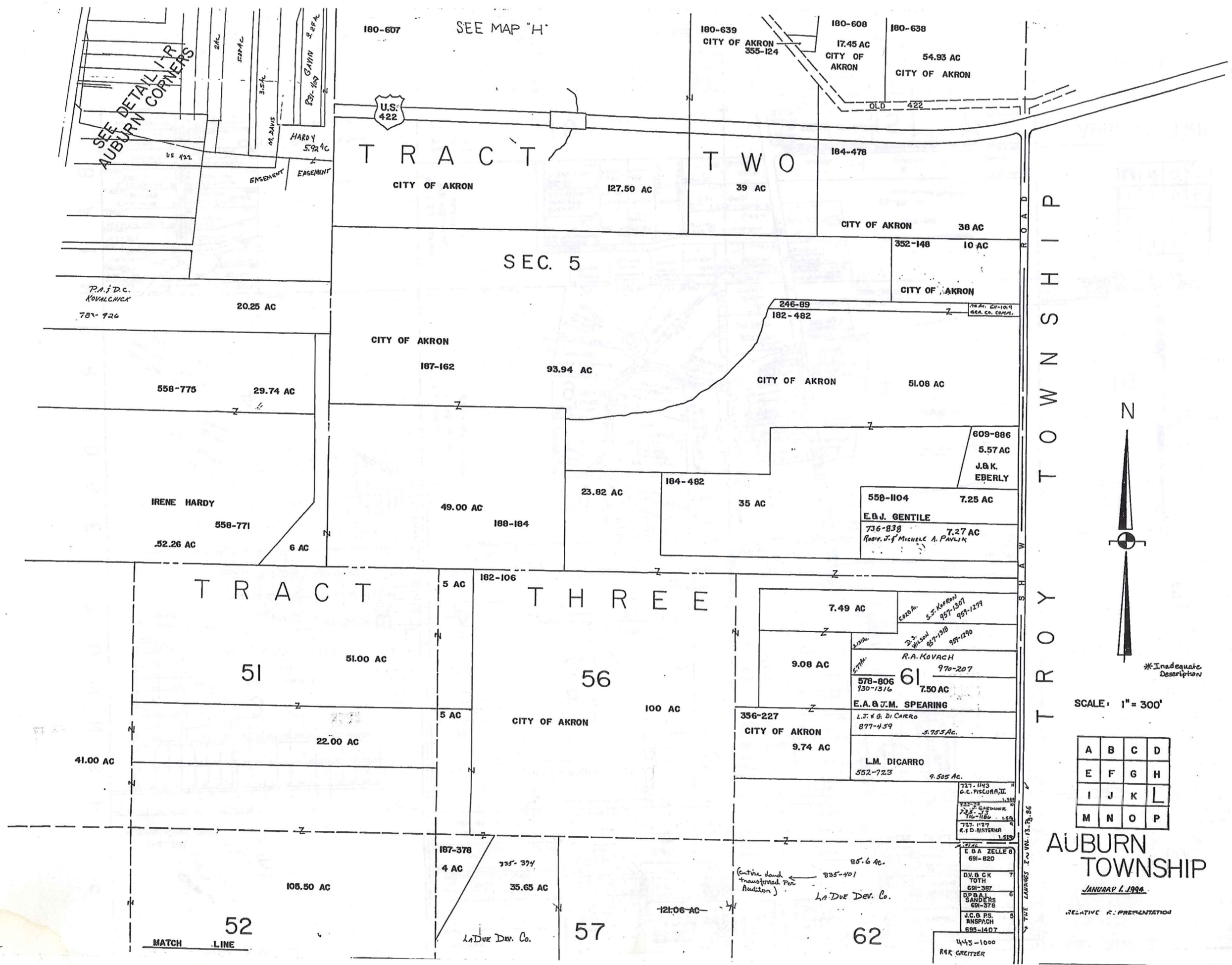
H.C. & M. MITCHELL
655-410

See APP. 10

C.G. SIMKO

TRW-REDI SCALE IN 1/10 OF AN INCH

1-800-345-7334



SEE DETAIL FOR
AUBURN CORNERS

SEE MAP "H"

P.A. & D.C.
KOVACHICK
78-726

IRENE HARDY
558-771
52.26 AC

TRACT
51
51.00 AC

TRACT TWO
CITY OF AKRON
127.50 AC

SEC. 5

CITY OF AKRON
187-162
93.94 AC

49.00 AC
188-184

TRACT THREE

56
100 AC
CITY OF AKRON

52

105.50 AC

187-378
4 AC
L.A. Dev. Co.

57

121.06 AC

62

(entire land transferred Per Auditor)
L.A. Dev. Co.

E. & A. ZELLE
691-820
D.V. & C.K. TOTH
691-387
D.P. & S. SANDERS
691-578
J.C. & P.S. RANSBACH
695-1407
445-1000
R.R. GREITZER

T R O Y T O W N S H I P



*Inadequate Description

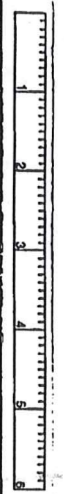
SCALE: 1" = 300'

A	B	C	D
E	F	G	H
I	J	K	L
M	N	O	P

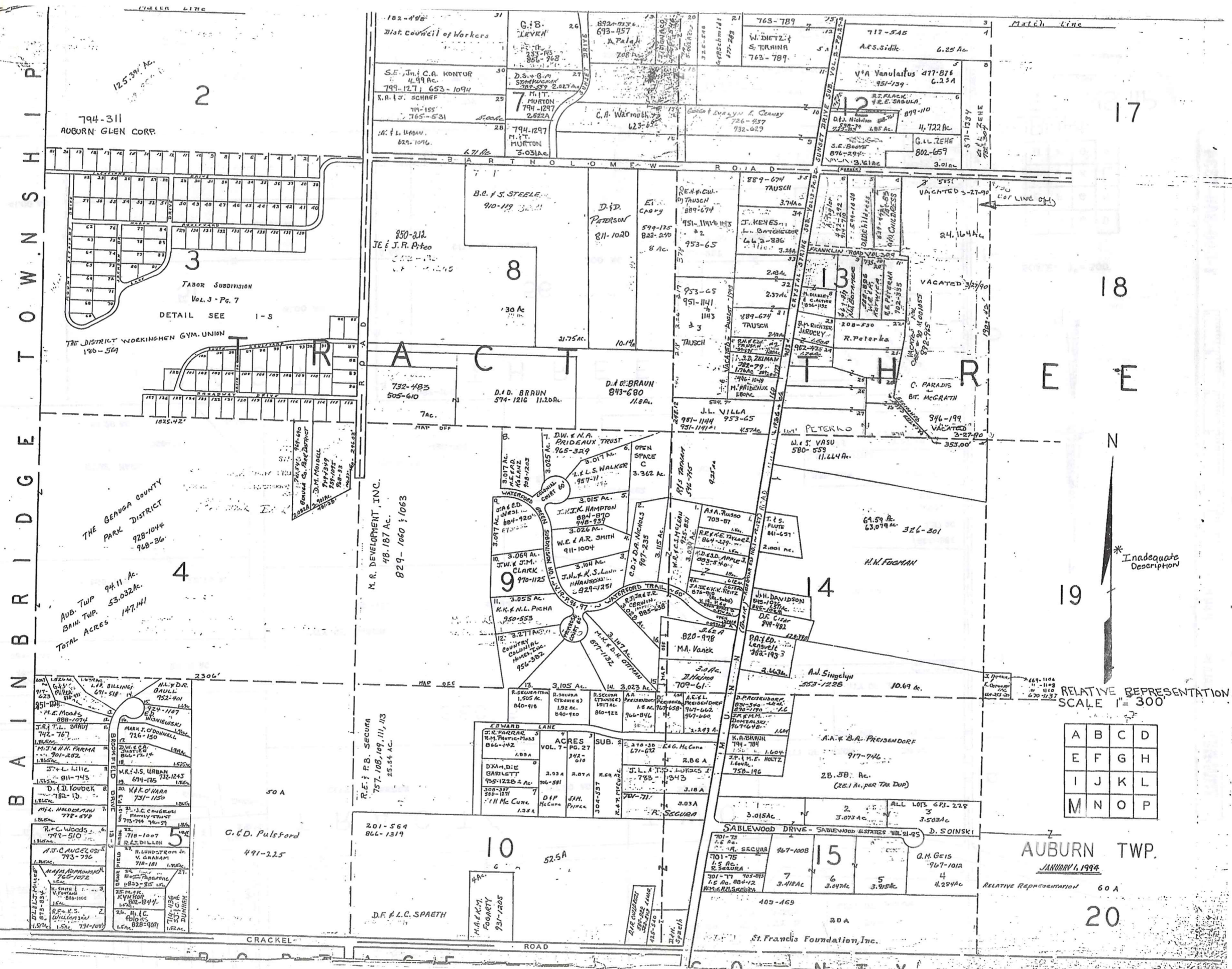
AUBURN TOWNSHIP
JANUARY 1, 1996

RELATIVE REPRESENTATION

TRW-REDI
SCALE IN 1/10 OF AN INCH



1-800-345-7334



B A I N B R I D G E T O W N S H I P

TRW-REDI SCALE IN 1/10 OF AN INCH 1-800-345-7334

794-311
AUBURN GLEN CORP.

LABOR SUBDIVISION
Vol. 3 - Pg. 7
DETAIL SEE 1-5

THE DISTRICT WORKINGMEN GYM UNION
186-569

THE GENUGA COUNTY
PARK DISTRICT
928-1044
968-36

AUB. TWP 94.11 Ac.
BAIN. TWP 53.032 Ac.
TOTAL ACRES 147.141

1	2	3	4	5
6	7	8	9	10
11	12	13	14	15
16	17	18	19	20

A	B	C	D
E	F	G	H
I	J	K	L
M	N	O	P

AUBURN TWP.
JANUARY 1, 1994

20

* Inadequate Description

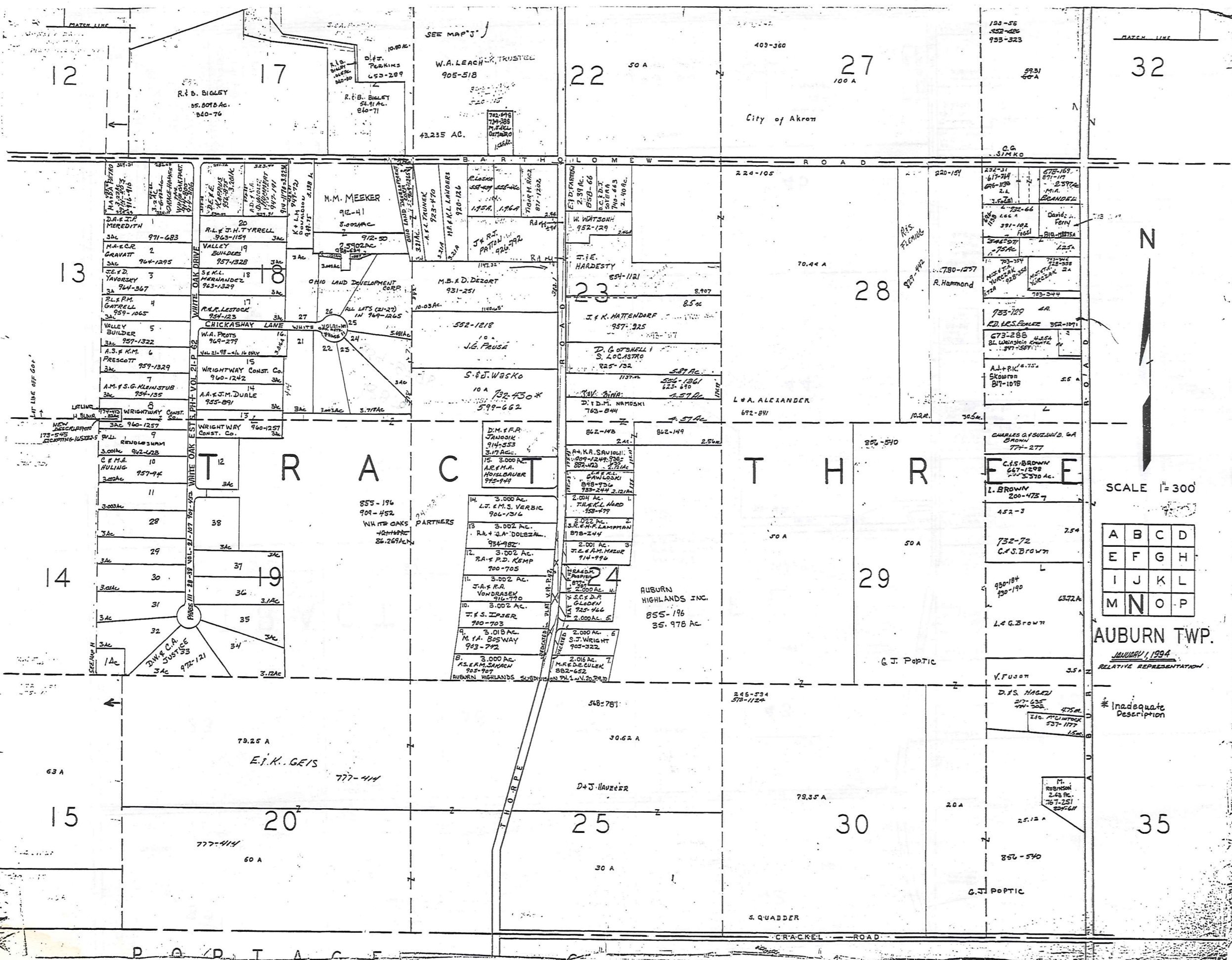
RELATIVE REPRESENTATION SCALE 1" = 300'

RELATIVE REPRESENTATION 60 A

CRACKEL ROAD

ROAD

St. Francis Foundation, Inc.



TRW-REDI
SCALE IN 1/10 OF AN INCH



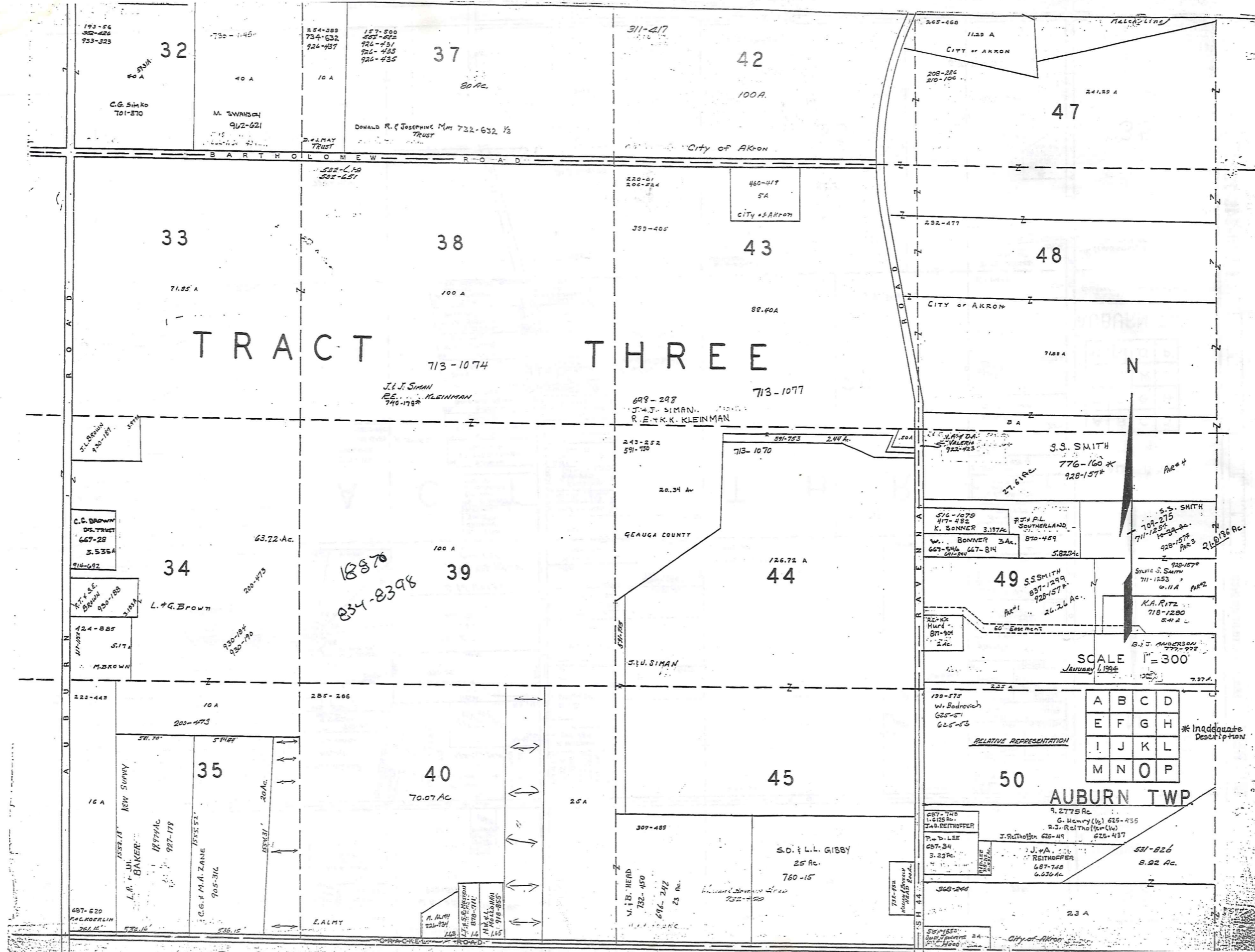
SCALE 1" = 300'

A	B	C	D
E	F	G	H
I	J	K	L
M	N	O	P

AUBURN TWP.
JANUARY, 1994
RELATIVE REPRESENTATION

* Inadequate Description

1-800-345-7334



TRW-REDI
 SCALE IN 1/10 OF AN INCH
1-800-345-7334

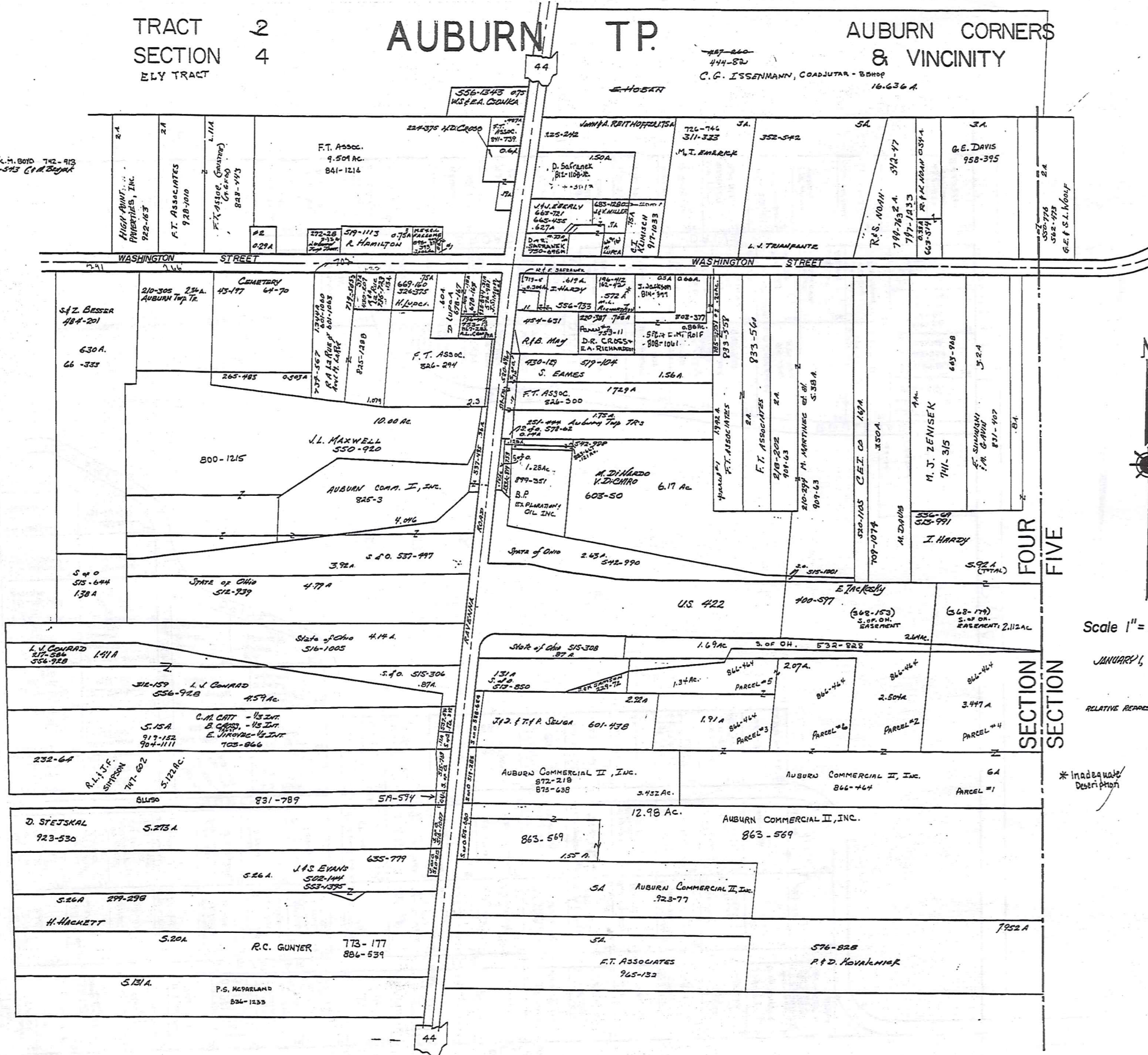
TRACT 2
SECTION 4
ELY TRACT

AUBURN TP.

AUBURN CORNERS
& VICINITY

447-660
444-820
C.G. ISSENMANN, COADJUTOR - BOHOP
16.636 A.

42
42 J.G. & K.M. BOYD 742-913
43 373-343 C.A. BRYANT



(10 ac.)
Scale 1" = 2.5 ch. = 165 ft.

JANUARY 1, 1994

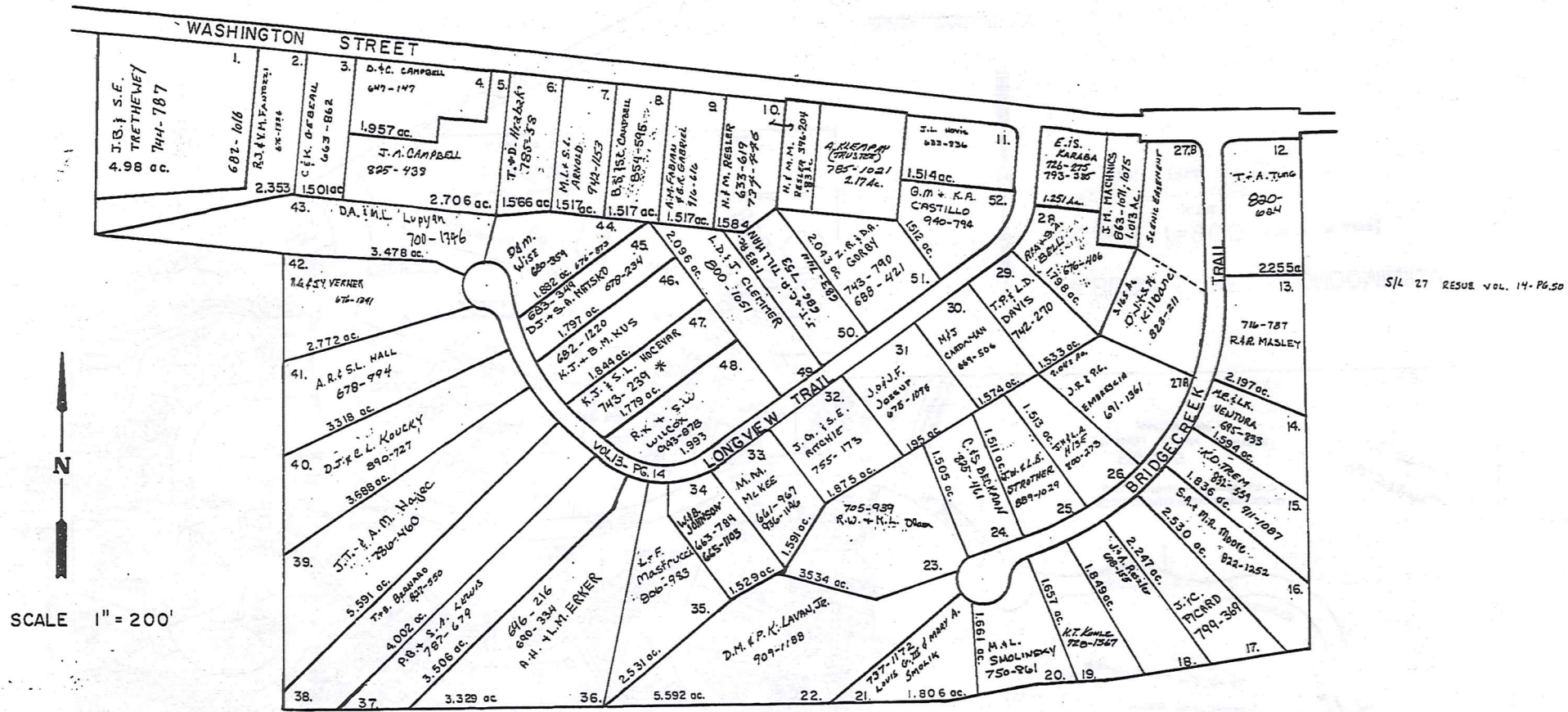
RELATIVE REPRESENTATION

* Inadequate
Description

TRW-REDI
SCALE IN 1/10 OF AN INCH
1-800-345-7334

I-R

AUBURN
 O.L. 8 SEC. 2
 O.L. 6 SEC. 3 TRACT 2



LONGVIEW FARMS 1 & 2

VOL. 12 PP. 62-64

VOL. 13 PP. 13-16

JANUARY 1, 1994
 RELATIVE REPRESENTATION

* Inadequate
 Description

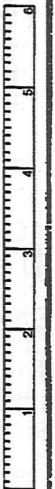
TRW-REDI

SCALE IN 1/10 OF AN INCH

1-800-345-7334

BLDG/UNIT	TRANSFERRED TO	VOL	Pg	TRANSFERRED TO	VOL	Pg	TRANSFERRED TO	VOL	Pg	TRANSFERRED TO	VOL	Pg
BLDG W-1 A-66	(WINDWARD WAY) R. & M. LAVIN	15	1									
BLDG W-2 A-4 B-62	(WINDWARD WAY) P. & A. BRICKENBEN J. KINZIG	17	438									
BLDG W-3 A-34 B-32	(WINDWARD WAY) A.D. O'HAYD W.S. RINI	14	1074									
BLDG W-4 A-50 B-48	(WINDWARD WAY) D. DOLCH D.E. KING, TRUSTEE	14	118									
BLDG W-5												
BLDG W-6 A-46 B-44 C-42	(WINDWARD WAY) DEJ DANTZ W.L. RAJUS WATZ DANNERS	15	1									
BLDG W-7 A-40 B-38 C-36	(WINDWARD WAY) HARRIS ESSLING H. EPPERENT C. MALKLAND	14	72									
BLDG W-8 A-38 B-32	(WINDWARD WAY) M.C. LEFFERER	14	1374									
BLDG W-9 A-30 B-28 C-26	(WINDWARD WAY) ER. DIFANI R. DEUTSCH B.H. WARDER	14	72									
BLDG W-10 A-34 B-32 C-30	(WINDWARD WAY) G.C. HERMAN K.D. WERNER H. EPPERENT	14	1074									
BLDG W-11 A-16	(WINDWARD WAY) 1928 LAKESIDE ESTATE SERVICES	14	118									
BLDG W-12 A-14 B-12 C-10	(WINDWARD WAY) G.A. TRUHL C.L. DUBOS, TRUSTEE S.M. & T. GUN	12	72									
BLDG 13												
BLDG 14 A-38 B-30 C-22	C.J. AD. MC BRIDE THOMAS & GIORIA CAVES DONALD & DIKS WISE	15	4757									
BLDG 15 A-14 B-16 C-18	(DOVE COURT) T.D. & D.R. CLARK T. & B. PORTER M. LIDGEBY	15	17									
BLDG 16 A-30	(CLUB LANE) R.L. & R. MINTZ	15	1027									
BLDG 17 A-34 B-36 C-38	(CLUB LANE) N. & A. SOUWARTZ D.H. METZ, JR. H.T. EAY	15	91									
BLDG 18												
BLDG 19 A-32 B-34	J.A. ROGERS J.W. & K.J. LASHBY	15	27									
BLDG 20 A-36 B-38	MARK & ANNCY MILLS R. G. ROBERTS	14	1114									
BLDG 21 A-108 B-107 C-109	(SIGNAL HILL) 1944 J.R. & E. LAMIN GILBERTINE TWOMEY B.W. & E.R. HADLERS	15	21									
BLDG 22 A-110	(SIGNAL HILL) RICHARD & KATHEN A. WARDER	15	70									
BLDG 23 A-112 B-114	(SIGNAL HILL) T.D. EDWARDS A.R. EDW, TRUSTEE	15	91									
BLDG 24 A-116 B-118 C-120	(SIGNAL HILL) R.J. KOCHER R.A. GREEN J. SMITH	15	434									
BLDG 25												
BLDG 26												
BLDG 27 A-136	(SIGNAL HILL) A.G. I.L.L. SCHUBING	20	11548									
BLDG 28 A-138 B-140	(SIGNAL HILL) P. & R. KYSELA H.B. & S.D. MORGENTHAU	15	56									
BLDG 29 A-142	(SOUTH PINTAIL) J.J. & Z.L. LIPSTAN M.C. & R.H. ERUIT	15	60									

1-800-345-7334



SCALE IN 1/16 OF AN INCH

TRW-REDI

BLDG/UNIT	TRANSFERRED TO	Vol. P4	Vol. P5	Vol. P6	Vol. P6	Vol. P6
BLDG 30 A-86 B-84	(SOUTH PINNACLE) L.R. REBA S.M. VENNETTI	15 10 190 608 839 987				
BLDG 31 A-116 B-116 C-180	(NORTH PINNACLE) L.M. & G.A. COETRIGHT R.A. ERITZ R.C. & J.L. JOHNSON	15 83 188 832 192 177 850 680				
BLDG 32 A-152 B-154	(NORTH PINNACLE) D.C. & R.G. SKINNER W.K. OLIVER	15 91 151 889 151 559				
BLDG 33						
BLDG 31 A-110 B-112 C-164	(NORTH PINNACLE) D.H. & L.M. MATHEWS E.V. GARSDON	15 182 156 179 159 162				
BLDG 31 A-114 B-116 C-178	(NORTH PINNACLE) E.F. & C.L. SEASON R.V. HOUSE B.A. & G.E. SWARTON	15 136 179 311 951 336 929 3				
BLDG 38 A-180 B-182	(NORTH PINNACLE) W.N. & J.A. SCHWABER H. & N. WURSTEN	16 193 178 1087 789 971				
BLDG 39						
BLDG 40 40-188	(WOODSONG WAY) C.T. & RONI	16 106-122 831 681				
BLDG 41 190	(Woodsong Way) L.J. & E.H. DOLAN	15 145 884 24				
BLDG 42 A-192	(WOODSONG WAY) H.E. HENDERSHOFT	16 478 871 58				
BLDG 43						
BLDG 44 A-196	(WOODSONG WAY) K. & E. SORACE	16 1185 853 156				
BLDG 45 A-198	(WOODSONG WAY) M. & L. STANTON-ALICES	17 187 821 162				
BLDG 46 200	(WOODSONG WAY) R. JR. & C. GUNLAND	17 183 829 114				
BLDG 47 A-202	(WOODSONG WAY) M. PENNERO	17 86 814 791				
BLDG 48 A-204	(WOODSONG WAY) M.L. RISIUS	18 333 849 510				
BLDG 49						
BLDG 50 A-210 B-212	(TWIN CREEKS) L.R. CROUSE P. & E. CHOPPE	16 123 151 167 887 59				
BLDG 51 A-214 B-216	(TWIN CREEKS) R.T. & J. BEAUS K.M. CARLSON	17 121 857 416 895 72				
BLDG 52 A	(TWIN CREEKS)	21 86				
BLDG 53 A-216 B-218	(TWIN CREEKS DRIVE) I. & B. COLLIER H. & H. DUBOIS	17 846 817 566 818 919				
BLDG 54 A-262	(TWIN CREEKS DRIVE) E. ADLER	16 10-155 809 214				
BLDG 55 A-214 A-216	(TWIN CREEKS DRIVE) G. & S. VILJERS A. & S. KAMBER	16 109-157 820 343 861 369				
BLDG 56 A-218 B-210	(TWIN CREEKS) D. & J. PIPER E.A. LEONETTI	16 10-272 853 086 771 158				
BLDG 57 A-216	(TWIN CREEKS) R.W. SWIRK	16 926 791 953				
BLDG 58 A-218 A-280	(TWIN CREEKS) D.J. JONES S.H. & R.L. SILVER	15 1933 110 1019 110 1019				
BLDG 59 A-282 B-284	(TWIN CREEKS) R.C. & S.C. MARGANANT W.K. INDERLIED	16 35-40 187 412 113 416 833 611				
BLDG 60						
BLDG 61 A-296	(OVERLOOK BROOK DRIVE) E. BELTON	18 10-143 852 84				
BLDG 62 A-298 B-300 C-302	(OVERLOOK BROOK DRIVE) T.J. & P.A. KRIGS A.M. KOVAL K. & C. WILSON	16 8-11 816 029 912 258 713 416				
BLDG 63 A-304 B-306	(OVERLOOK BROOK DRIVE) P.L. FARRON C.R. ZACHEM	16 82 776 150 796 150				

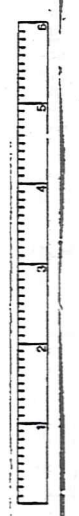
1-800-345-7334



TRW-REDI SCALE IN 1/10 OF AN INCH

BLDG/UNIT	TRANSFERRED TO	VOL.	Pg.	TRANSFERRED TO	VOL.	Pg.	TRANSFERRED TO	VOL.	Pg.	TRANSFERRED TO	VOL.	Pg.
BLDG 94												
BLDG 95												
BLDG 96												
BLDG 97												
BLDG 98												
BLDG 99												
BLDG 100												
BLDG 101 A-100	(FARMWAY VIEW) G. C. KAGY	21	1-3									
BLDG 102												
BLDG 103												
BLDG 104												
BLDG 105												
BLDG 106 A-420	(FARMWAY VIEW) H.C. BULL, TRAVLER	21	70									
BLDG 107 A-421	(FARMWAY VIEW) G. L. RYE	21	48-51 994 918									
BLDG 108 A-422	(FARMWAY VIEW) E. F. S. GARD	17	135-117 831 478									
BLDG 109												
BLDG 110												
BLDG 111												
BLDG 112												
BLDG 113 A-402	(FARMWAY VIEW) S. PETERSON	19	31-35 626 926									
BLDG 114 A-423	(CHIPPING LANE) R. R. RESCH	19	16-18 852 483									
BLDG 115 A-424	(CHIPPING LANE) D. S. J. PULLMANING	18	131-11 849 809									
BLDG 116												
BLDG 117												
BLDG 118 A-427	(CHIPPING LANE) J.G. WIGGELMORERT	18	145- 450 146									
BLDG 119 A-430	(CHIPPING LANE) D. J. J. R.M. JORCE	18	76-79 340 316									
BLDG 120 A-431 B-432	(CHIPPING LANE) S.L. & M.R. DURGHIAS P. A. J. LEIKEN	19	57-62 896 618 861 935									
BLDG 121												
BLDG 122 A-434	(CHIPPING LANE) R.A. & B. NEWSON	21	163 971 12									

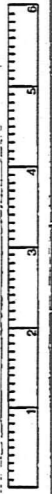
TRW-REDI SCALE IN 1/10 OF AN INCH 1-800-345-7334



10
4-0

1-0
0-4

1-800-345-7334



SCALE IN 1/10 OF AN INCH

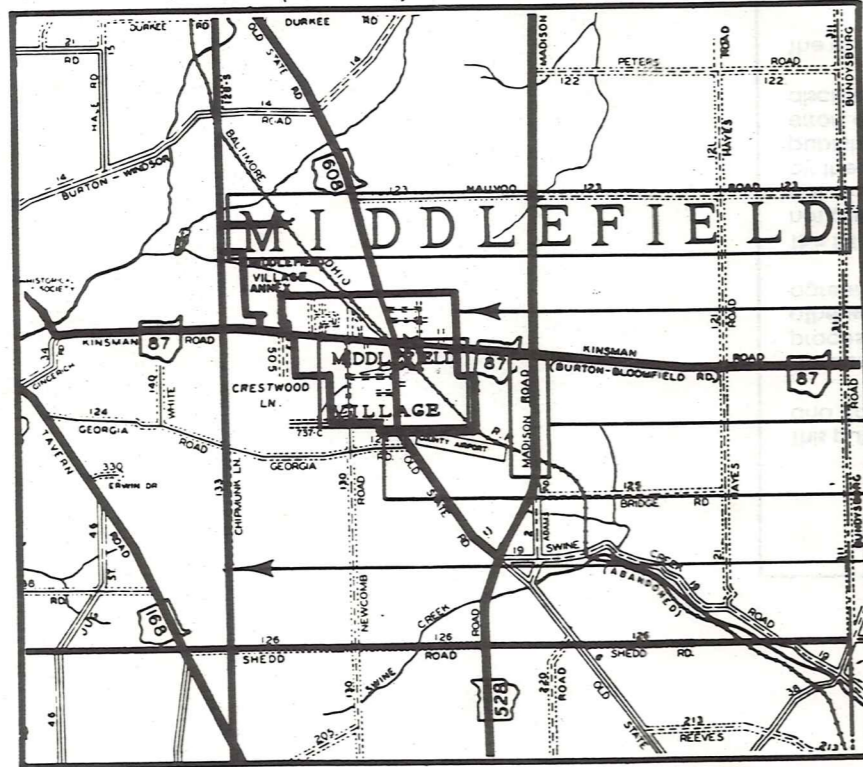
TRW•REDI

BUDG UNIT	TRANSFERRED TO	VOL	Pg.	TRANSFERRED TO	TRANSFERRED TO	VOL.	Pg.	TRANSFERRED TO	Vol.	Pg.
BUDG 123										
BUDG 124	(EAGLES TONNE)	18	9599							
A-485	E. O. MARSH	391	537							
BUDG 125	(EAGLES ROUTE)	18	1241							
A-486	W.F. CASHMAN, JR. 3 R.M. MARION	618	1245							
BUDG 126	(EAGLES ROUTE)	18	4338							
A-487	B. I. HUNTER	333	357							
BUDG 128										
BUDG 129	(LONG DRIVE)	18	133							
A-490	G. F. O'BRIEN	347	47							
BUDG 130	(LONG DRIVE)	18	121							
A-491	J. & A. HURSON	353	1059							
<p>TRW</p> <p>Amount/ LINES Randonment Assoc. Inc 318 374-386</p> <p>Par # 1 2 1680c</p> <p>Par # 2 4 0320c</p> <p>Par # 3 1 8600c</p> <p>Par # 4 1 09220c</p> <p>Par # 5 1 33220c</p> <p>Par # 6 1 6 6230c</p>										

Explanation and Use Sheet for Geauga County, Ohio

A

SAMPLE (PARTIAL) COUNTY INDEX MAP



Tract Lot Number

Acreage

Township Name

Village Boundary

Street Name

Village Name

Township Boundary

Owners Name

Denotes Continuous Ownership

Deed Book & Page

Map Page Number

Township Name

Village Name

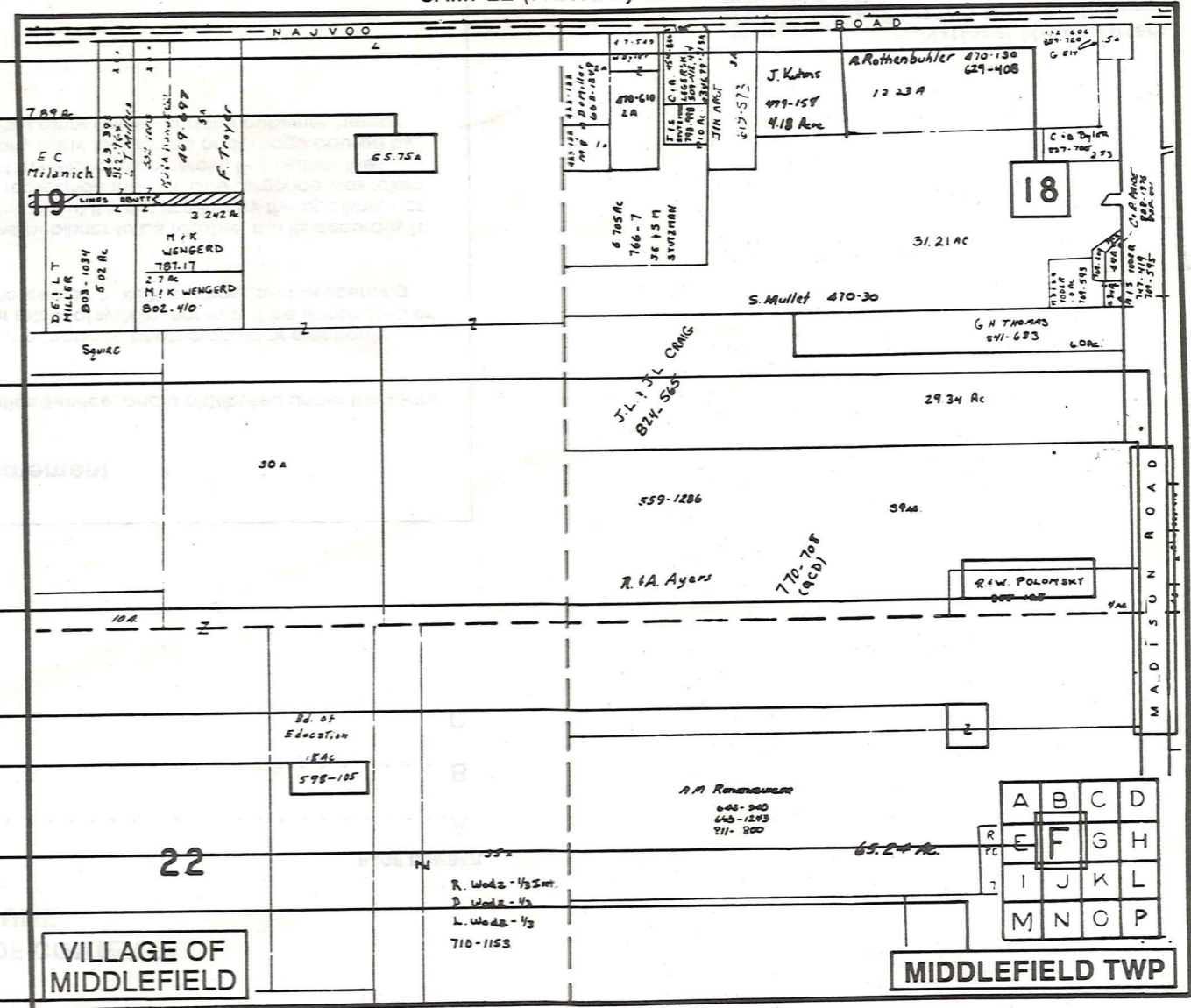
Village Boundary

Street Name

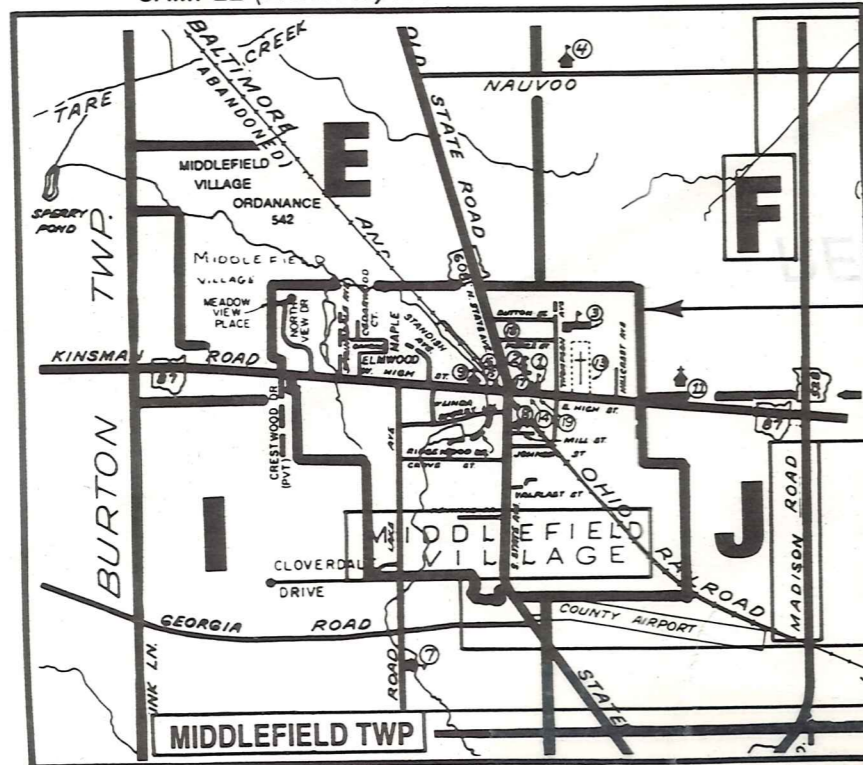
Village Name

Township Name

SAMPLE (PARTIAL) MAP PAGE



SAMPLE (PARTIAL) MUNICIPALITY INDEX MAP



USE OF THE MAP VOLUME

- LOCATE THE GENERAL AREA OF INTEREST ON THE COUNTY INDEX MAP AND NOTE THE MUNICIPALITY NAME (TOWNSHIP OR VILLAGE).
 - REFER TO THE TABLE OF CONTENTS AND NOTE THE BEGINNING ATLAS PAGE NUMBER FOR THE MUNICIPALITY OF INTEREST.
 - TURN TO THE PAGE INDICATED, ON THIS PAGE WILL APPEAR AN INDEX MAP FOR THAT MUNICIPALITY.
 - LOCATE THE GENERAL AREA OF INTEREST AND NOTE THE MAP PAGE NUMBER. THIS MAY BE EITHER A LETTER OR A NUMBER.
 - MAP PAGES ARE IN ALPHABETICAL (OR NUMERICAL) SEQUENCE FOLLOWING THE MUNICIPALITY INDEX MAP. FOLLOW SEQUENCE TO THE MAP PAGE INDICATED.
 - LOCATE SPECIFIC PARCEL OF INTEREST AND NOTE THE DESIRED INFORMATION.
- NOTE: ON SOME MAPS YOU MAY BE REFERRED TO A DETAIL SHEET SHOWING AN ENLARGEMENT OF THE AREA. THESE MAPS ARE FOUND AT THE END OF THE REGULAR MAP PAGES IN EACH MUNICIPALITY IN EITHER ALPHABETICAL OR NUMERICAL SEQUENCE.
- NOTE: CHARDON VILLAGE HAS TITLE SHEETS. TO LOCATE OWNERS NAME, NOTE THE PARCEL NUMBER, REFER TO THE TITLE PAGE FOLLOWING THE MAP OF INTEREST, FOLLOW NUMERICAL SEQUENCE TO THE PARCEL NUMBER OF INTEREST AND NOTE THE DESIRED INFORMATION. IN ALL OTHER MUNICIPALITIES THE OWNERS NAME APPEARS ON THE MAP PAGE.